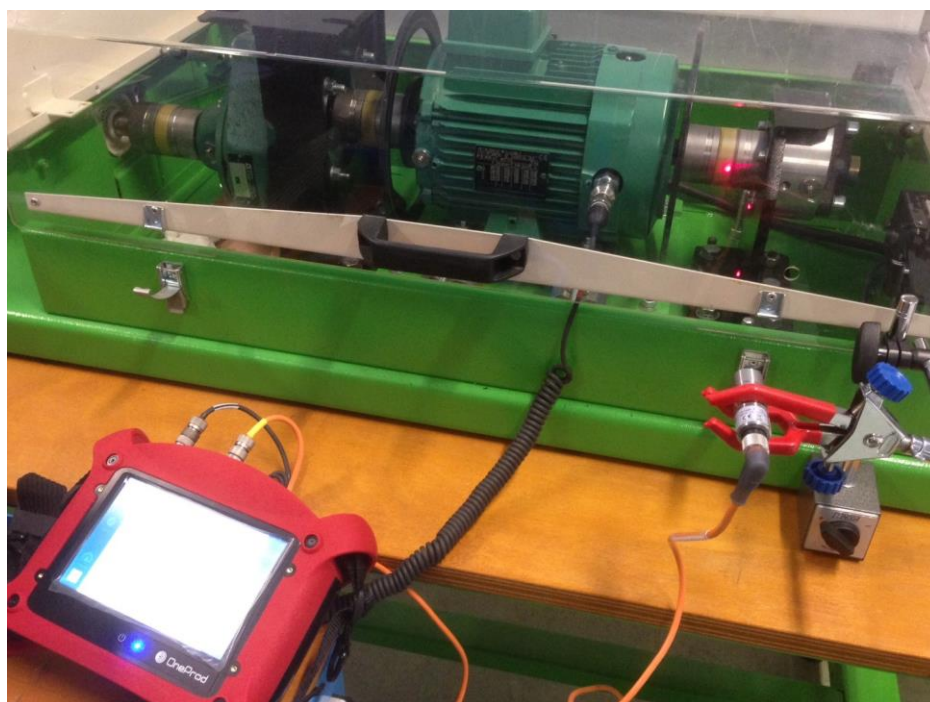
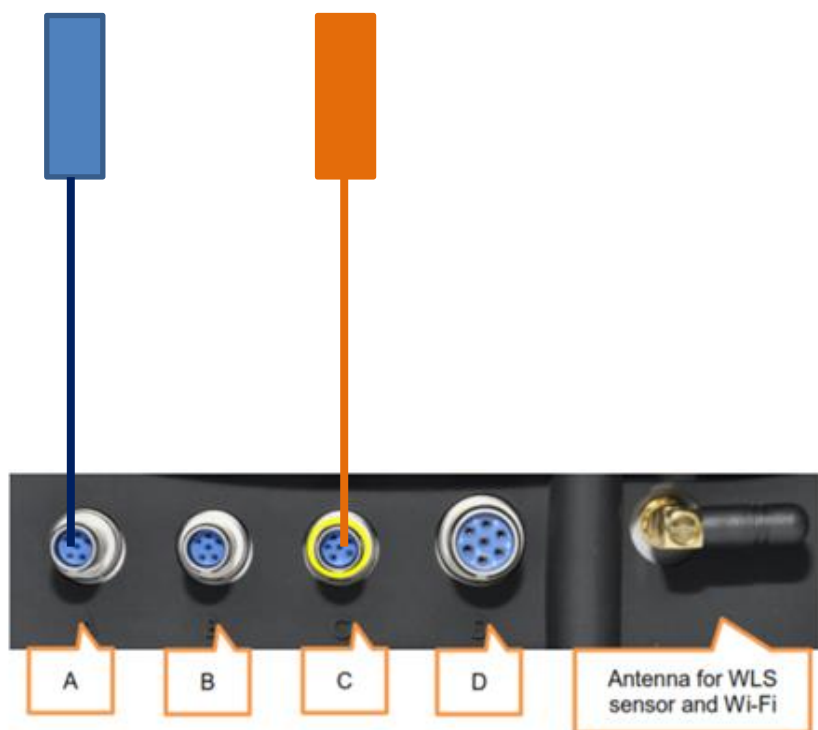
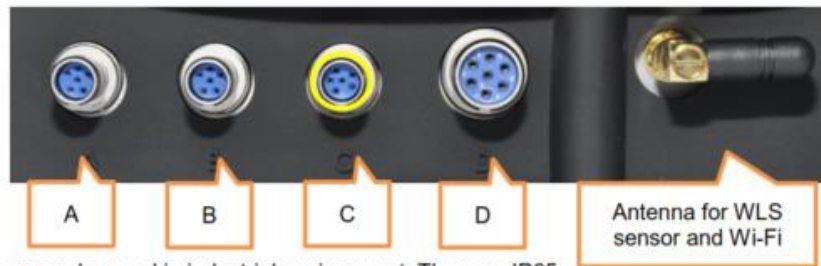


Accéléromètre

Top tour



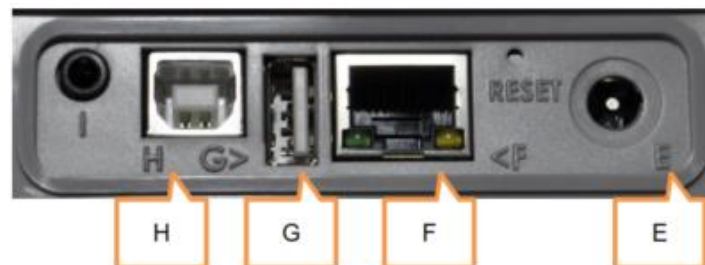


Those connectors can be used in industrial environment. They are IP65.


- Connector A: channels 1 and 3. Use this connector when the instrument is set in single-channel mode.
- Connector B: channels 2, 3 and 4. Use this connector with wired triaxial sensor when the instrument is set in multi-channel mode.
Note: for 2-channel measurement, use connectors A and B. For 4-channel measurement, you also need Y adaptors.
- Connector C: Tachometer input, Stroboscope output, Power supply input. It is marked in **yellow** as well as all cables used on this connector
- Connector D: Ethernet, Microphone input, Audio output.

Warning:

- Do not connect channels 1, 2, 3, 4 and tachometer input on a not buffered output or in parallel to other instrument as their impedance is not maintained when changing configuration or when the instrument is switched off.
- Respect the maximum input voltage to the A/B/C/D connectors: maximum input voltage ± 24 V DC, ± 24 volts peak AC.



Those connectors are behind a trapdoor. It must remain close in industrial environment to preserve the IP65 protection. Use those connectors only in office environment.

- Connector E: Power supply input 
- Connector F: Ethernet RJ45
- Connector G: USB 2 type A host (for USB memory stick)
- Connector H: USB 2 type B device (direct connection with PC)
- Connector I: serial interface for maintenance purposes only